

Fig.M516 & Fig.M525 Pressure Reducing Valve



FEATURES & BENEFITS

- PRVs enable control of pressure from boosted cold water supplies to match site requirements
- Simple to install
- Features an integral strainer preventing debris from affecting valve performance
- WRAS approved
- Adjustable outlet pressure from 1-8 bar
- Conforms to BS EN 1567 (Fig.M516)

MATERIALS

Component	Material	Specification
Body	Bronze	BS EN 1982 CC499K
Internal Parts	Bronze Brass Stainless Steel	BS EN 1982 CC499K BS EN 12164 CW614N SS 316 Ti
Spring	Spring Steel	DIN 17223 1.200
Strainer Screen	Stainless Steel	SS 304
Seal	EPDM	WRAS approved



Fig.M516

Note: Pressure gauge used to measure inlet and outlet pressure, available with axial or vertical threaded connection and should be ordered separately. For each valve, two pressure gauges are required

DIMENSIONS & WEIGHTS

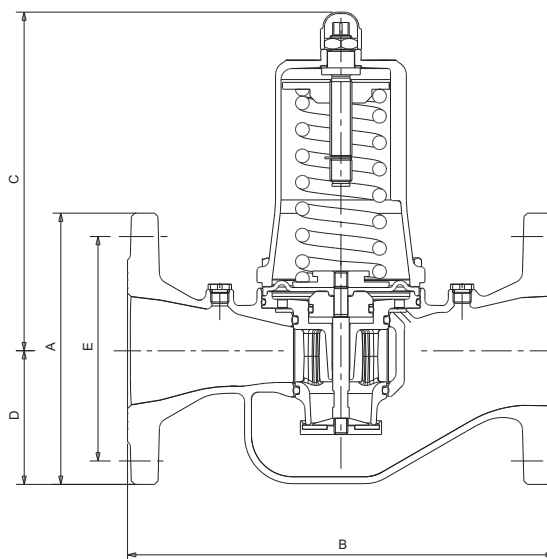
Fig. No	Size (DN)	A (mm)	B (mm)	C (mm)	D (mm)	E (mm)	Weight (kg)
Fig.M516/ Fig.M525	65	185	290	235	93	145	20
Fig.M525	80	200	310	235	100	160	22

PRESSURE/TEMPERATURE RATINGS

Temperature (°C)	-10 to 85
Pressure (bar)	16, 25

*Shell tested up to PN40

DIMENSIONAL DRAWINGS



PRESSURE RATING Fig.M516 - PN16, Fig.M525 - PN25 **MEDIUM** Water Only

OUTLET PRESSURE RANGE 1 - 8 bar **PRE SET OUTLET PRESSURE** 3 bar

CONNECTIONS Flanged BS EN 1092-3

DESIGN STANDARD PN16 conforms to BS EN 1567 and PN25 general conformity to BS EN 1567

APPROVALS WRAS, DVGW, PED 97/23/EC



PO BOX 719, IPSWICH, IP1 9DU
HOME SALES: +44 (0)1744 458670
EXPORT SALES: +44 (0)1744 458671
TECHNICAL HELPLINE: 0845 604 1790

FAX: +44 (0)1744 26912
EMAIL: uksales@hattersley.com
EMAIL: export@hattersley.com
www.hattersley.com

Every effort has been made to ensure that the information contained in this publication is accurate at the time of publishing. Hattersley assumes no responsibility or liability for typographical errors or omissions or for any misinterpretation of the information within the publication and reserves the right to change without notice.